

# GEOLOGY & GEOPHYSICS



**ALLAM, Amir Awad** **Research Assistant Professor**  
 801-581-6820 amir.allam@utah.edu 241 FASB  
 Colloid and nano-particle transport, groundwater remediation, cell adhesion, targeted drug delivery, numerical modeling at pore-scale and continuum level



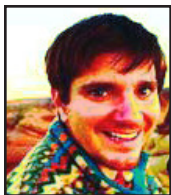
**Anderson, Leif** **Research Assistant Professor**  
 801-581-7062 leif.anderson@utah.edu 401 FASB



**FARRELL, Jamie** **Research Assistant Professor**  
 801-581-7856 jamie.farrell@utah.edu 282 FASB  
 Analysis of Yellowstone seismicity, velocity structure of the Yellowstone system using ambient noise, analysis of earthquake swarm activity including its relationship to local uplift/subsidence signals.



**FERNANDEZ, Diego** **Research Professor**  
 801-587-9366 diego.fernandez@utah.edu 431 FASB  
 Environmental geochemistry and geochronology. Co-director ICPMS and Strontium Isotope labs.



**IORELLA, Richard P.** **Adjunct Assistant Professor**  
 801-581-7062 rich.fiorella@utah.edu 455 FASB



**GODSEY, Holly** **Associate Professor (Lecturer)**  
 801-587-7865 holly.godsey@utah.edu 273 FASB/452 INSCC  
 Director of Student Success & Teacher Development, Center for Science & Mathematics Education



**JACKSON, Marie** **Research Associate Professor**  
 801-581-7865 m.d.jackson@utah.edu 273 FASB  
 Scientific drilling at Surtsey volcano, Iceland; authigenic mineral cements and material properties of pyroclastic rocks and ancient Roman concretes; volcanic pozzolans for sustainable concrete.



**KARNER, James (Jim)** **Research Associate Professor**  
 801-585-5976 j.karner@utah.edu 405 FASB  
 Meteorite recovery, Antarctica; comparative planetary mineralogy, basalts, oxidation states

## Geology & Geophysics (continued)



**LOEWEN, Mark**

801-891-6036

mloewen@nhmu.utah.edu

**Associate Professor (Lecturer)**

NHMU

Vertebrate paleontology, paleoecology, paleogeography, phylogenetic systematics



**MA, Huilian**

801-585-5976

huilian.ma@utah.edu

**Research Associate Professor**

405 FASB

Colloid and nano-particle transport, groundwater remediation, cell adhesion, targeted drug delivery, numerical modeling at pore-scale and continuum level



**MILLER, Scott R.**

801-581-6217

scott.r.miller@utah.edu

**Research Assistant Professor**

305 FASB

Surface processes and tectonic geomorphology



**PANKOW, Kristine**

801-585-6484

pankow@seis.utah.edu

**Associate Director/Research Professor-GG**

223 FASB

Analysis of Utah and Intermountain seismicity, detection and analysis of induced earthquakes, detection of other types of seismic signals.



**PECHMANN, James**

801-581-3858

pechmann@seis.utah.edu

**Research Associate Professor**

219 FASB

Earthquake seismology, earthquake hazards, seismotectonics, and crustal structure



**PETERMAN, David**

801-581-7062

david.peterman@utah.edu

**Research Assistant Professor**

415 FASB

Paleontology, Paleobiology, Paleoecology, Evolutionary Biomechanics, Robotics, Fluid Mechanics