

GEOLOGY & GEOPHYSICS



BIRGENHEIER, Lauren

Associate Professor

801-585-3158

lauren.birgenheier@utah.edu

323 FASB

Sedimentology; Stratigraphy; Petroleum Geology; Unconventional Resources; Paleoclimate



BOWEN, Brenda

Professor and Dir., GCSC

801-585-5326

brenda.bowen@utah.edu

251 FASB

Global Change and Sustainability; Fluid-Sediment Interactions; Surface Processes in Extreme Environments; Sedimentary Geochemistry; CO2 Sequestration; Human Impacts on Environment; Interdisciplinary STEM Ed.



BOWEN, Gabe

Professor

801-585-7925

gabe.bowen@utah.edu

459 FASB

Isotope Geochemistry; Paleoclimate; Carbon Cycle; Water Cycle; Forensic Ecology



BROOKS, Paul

Professor

801-585-2858

paul.brooks@utah.edu

429 FASB

Hydrology; Biogeochemistry; Snow; Climate; Water Resources; Hydrochemistry



CERLING, Thure

Distinguished Professor

801-581-5558

thure.cerling@utah.edu

453 FASB

Environmental Geochemistry; Mammal Physiology; Isotope Geochemistry; Isotope Ecology



CHAN, Marjorie

Distinguished Professor

801-581-6551

marjorie.chan@utah.edu

311 FASB

Sedimentary Geology



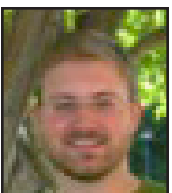
CRUMP, Sarah

Assistant Professor

801-581-7062

sarah.crump@utah.edu

311 FASB



IRMIS, Randall

Associate Professor

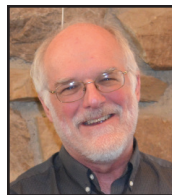
801-581-6555, 5-0561

irmis@umnh.utah.edu

343 FASB

Triassic Continental Vertebrate Ecosystems...Paleoecology & Taphonomic Processes

Geology & Geophysics (continued)



JEWELL, Paul

801-581-6636

paul.jewell@utah.edu

Professor

445 FASB

Surface Processes and Hydrology



JOHNSON, Cari

801-585-3782

cari.johnson@utah.edu

Professor

335 FASB

Basin Analysis; Sedimentology and Stratigraphy; Energy Geoscience



JOHNSON, William (Bill)

Professor and Chair

801-581-5033, 5-0561 william.johnson@utah.edu

441 FASB

Subsurface and Aquatic Contaminant/Colloid Fate and Transport



KOPER, Keith

Director UUSS/Professor - GG

801-585-3669

koper@seis.utah.edu

217 FASB

Array seismology, Earth's ambient seismic noise field, forensic seismology, rupture processes of large earthquakes, seismicity and tectonics of the Intermountain West, Earth structure at core



LAMBART, Sarah

Assistant Professor

801-581-6797

sarah.lambart@utah.edu

409 FASB

Igneous Petrology



LIN, Fan-Chi

Associate Professor

801-581-4373

fanchi.lin@utah.edu

271 FASB

Seismology; Geophysics



LIPPERT, Peter

Associate Professor

801-581-4599

pete.lippert@utah.edu

325 FASB

Continental Tectonics; Orogenic Systems; Surface Process Responses to Threshold Climate Events; Biomagnetism; Paleomagnetism and Rock & Mineral Magnetism



MIYAGI, Lowell

Associate Professor

801-581-6619

lowell.miyagi@utah.edu

265 FASB

Texture and Anisotropy Development under High Pressures and Temperature Conditions.

Geology & Geophysics (continued)



MOORE, Jeffrey

801-585-0491

jeff.moore@utah.edu

Associate Professor

449 FASB

Geohazards; Geomorphology; Geomechanics; Geophysics



RITTERBUSH (Allebush), Kathleen

801-587-8846

k.ritterbush@utah.edu

Associate Professor

341 FASB

Marine Paleoecology; Mass Extinctions; Ecological Transitions; Biomineralization and Biogeochemical Cycling; Animal Form and Function; Evolution



SOLOMON, Kip

801-581-7231

kip.solomon@utah.edu

Professor

425 FASB

Isotopes of Noble Gases, especially 3He and 4He



THORNE, Michael

801-585-9792

michael.thorne@utah.edu

Associate Professor

267 FASB

Global Seismic Structure; Core Mantle Boundary Layer Structure...Volcano Seismology



VAN DAM, Tonie

801-581-7266

tonie.vandam@utah.edu

Professor and Associate Chair

347 FASB

Geodetic techniques (GNSS, satellite gravity, and terrestrial gravity) to investigate changes in cryosphere and continental water shortage driven by climate warming



ZHDANOV, Michael

801-581-7750

michael.zhdanov@utah.edu

Distinguished Professor

259 FASB

Theoretical and Applied Geophysics; Inversion Theory; Electromagnetic Methods